

Product datasheet

ANTERIOR GRADIENT PROTEIN 2 HOMOLOG CHICKEN POLYCLONAL ANTIBODY

SKU: MM-0245-P

100 µg

OVERVIEW

Clonality:

Polyclonal

Host:

Chicken

Target:

Anterior gradient protein 2 homolog

Clone ID:

Preservative:

Ampicillin and streptomycin, 0.05% sodium aside.

Format:

Lyophilized purified total IgY in PBS pH7.4

Recommend starting dilution:

Reconstitute with deionized water. Optimal dilution has to be determined by the user.

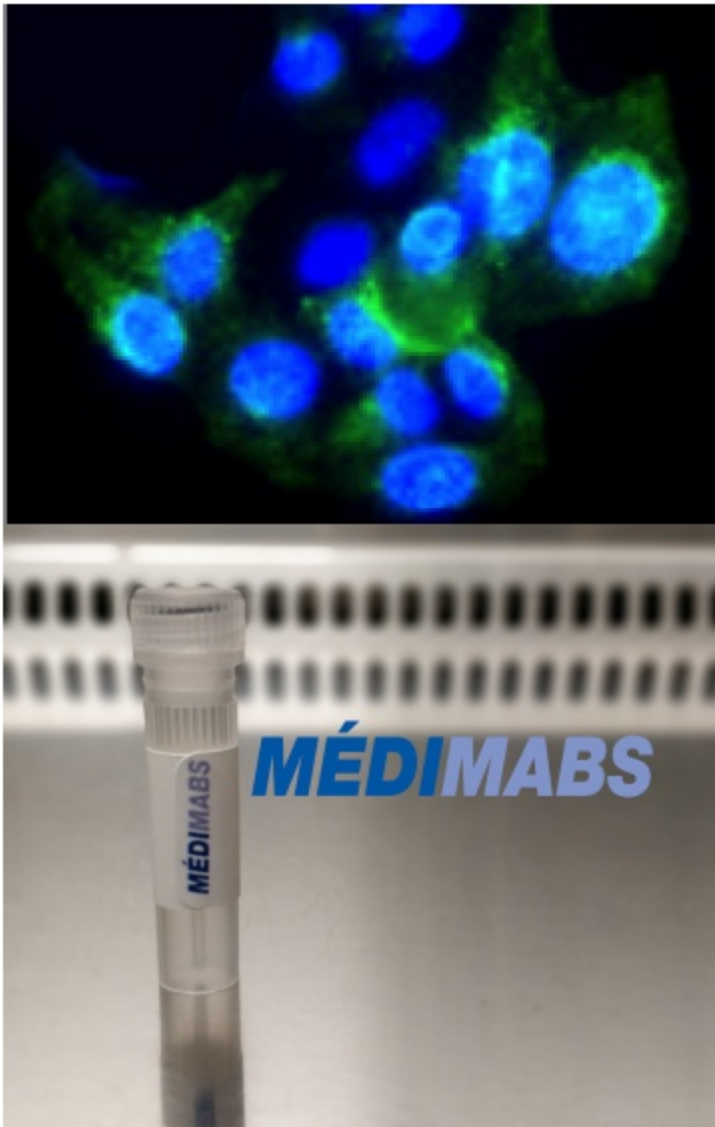
Limitations:

Research Use Only

References:

Storage:

Lyophilized antibodies can be kept at 4°C for up to 3 months and should be kept at -20°C for long-term storage (2 years). To avoid freeze-thaw cycles, reconstituted antibodies should be aliquoted before freezing for long-term (1 year) storage (-80°C) or kept at 4°C for short-term usage (2 months). For maximum recovery of product, centrifuge the original vial prior to removing the cap. Further dilutions can be made with the assay buffer. After the maximum long-term storage period (2 years lyophilized or 1 year reconstituted) antibodies should be tested in your assay with a standard sample to verify if you have noticed any decrease in their efficacy.

Image:

HeLa cells were fixed with 5% paraformaldehyde for 10 min, permeabilized with 0.5% Triton X-100 for 3 min and ARG2 was visualized with anti-chicken antibody (green). DNA was stained with DAPI (blue). In HeLa cells, ARG2 shows extranuclear localization in the endoplasmatic reticulum that is characteristic for many metastatic cancers.